

# Titanium FAQ

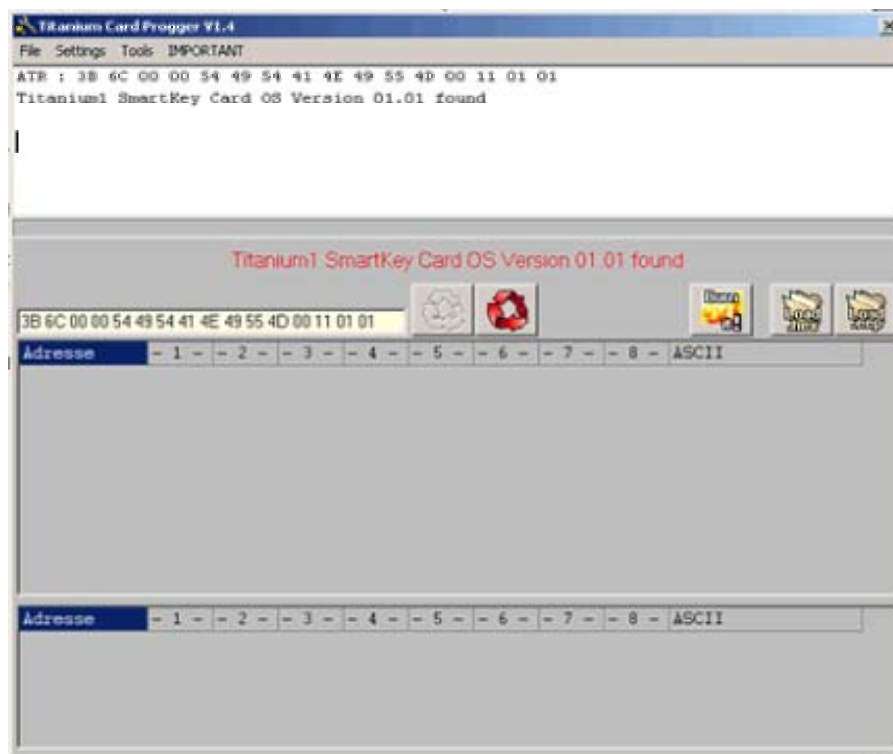
Hi Fellows,

here´s a Step-by-step guidance to program your Titaniumcard

## Step 1:

Check the OS-Version of your Titaniumcard:

Put your Titaniumcard into your Programmer at 3.57MHz, start the Titaniumprogger and click the green "connect" button. After this, a message like the following appears.



Case 1 – Message: **Version 1.00 found**

In this case you´ve to send your card back for upgrading to your reseller.

Case 2 – Message: **Version 1.01 found**

In this case you can upgrade the Titaniumcard by yourself by going ahead with Step 2

Case 3 – Message: **Version 1.02 found**

In this case you don´t have to up upgrade your Titaniumcard – go directly to Step 3

# Titanium FAQ

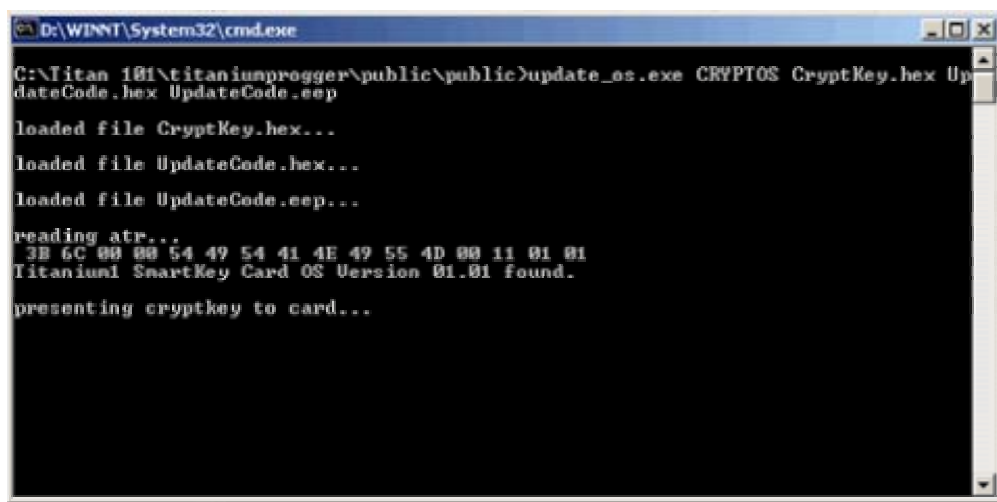
Step 2: Upgrading your Titaniumcard from 1.01 to 1.02

First of all you've to download the file: update.zip

You can find it @: <http://nowgetready.tripod.com/>

After decompressing the file, leave the Titaniumcard @ 3.57 Mhz in your programmer click "disconnect" in the Titaniumprogger and make a double-click at run.bat

A Dos-Prompt appears and the update starts automatically.



```
D:\WINNT\System32\cmd.exe

C:\Titan 181\titaniumprogger\public\public>update_os.exe CRYPTOS CryptKey.hex Up
dateCode.hex UpdateCode.eep

loaded file CryptKey.hex...
loaded file UpdateCode.hex...
loaded file UpdateCode.eep...

reading atr...
3B 6C 00 00 54 49 54 41 4E 49 55 4D 00 11 01 01
Titanium! SmartKey Card OS Version 01.01 found.

presenting cryptkey to card...
```

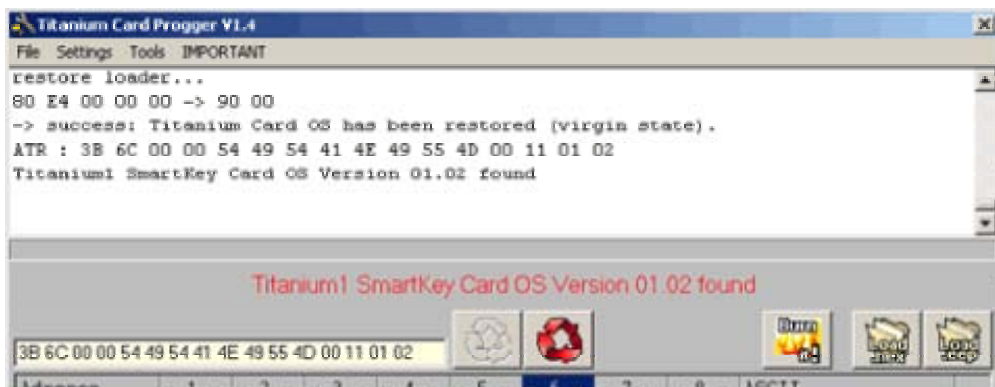
**Beware ! Don't disturb the progress !!!**

After round about 1-2 minutes the update is done and your Titaniumcard Version 1.02 is ready to use.

# Titanium FAQ

## Step 3: Programming the card

Leave the Titaniumcard @ 3.57 Mhz in your programmer, start Titanium-Progger again and click "connect"



Now you can see, that the OS-Version has changed to 01.02

Now you can load the .hex and .EEP file into the programmingsoftware.

At least click on the "burn it" button to start the programming sequence.

That's it.....